

Traditional

Let's hear
your Lion
ROAR!



Back to School
2020-2021

Lorain Preparatory Academy
Monthly Principal's Report

Important Dates And Changes to Open House

Monday 8/17 8am – 4pm
Chromebook pick up for all
online families.

Monday 8/17 4pm-5pm
Virtual Open House for all
Families

Tuesday 8/18 4pm-6pm –
In person Open House by
appointment for New and
Kindergarten Families

Thursday 8/20 – First Day of
School for all students

It has been a whirlwind summer of cleaning, planning, purchasing, and Studying to get to this point where we have the knowledge, supplies, and programs in place to educate your student in the best way possible for your family.

Our plan to offer you choices reflects our commitment to meet the needs of our families to the best of our abilities and to provide high quality education to all of our students.

We are one team, who at times this year will be learning in different places. No matter where we are learning and teaching, we have in common that we are all part of the LPA family and are committed to exhibiting LPA Pride and being our best selves every day.

We are excited to begin what will undoubtedly be a challenging year for all of us, but in the words of Sonia Gandhi "Together we can face any challenges as deep as the ocean and as high as the sky"

Open House

In order to keep our building safe for all of our staff and students, Open House has been moved to a virtual model for everyone except our new families and kindergarten families who may not have had a chance to be in our building yet. See the attached Open House Schedule and Links. Please reach out to us with any questions or concerns.

Traditional

Safety is our utmost priority for having students in the building. Please make sure to familiarize yourself with changing procedures and policies that are put in place to keep everyone safe and learning at school. We will keep families informed of any changes as we learn new information and get updates from the state and local officials.

Virtual

Students who are learning in an all at home setting will be rostered to, and have the support of the teachers here at LPA. Families should designate a person to serve as the student's learning coach and keep a consistent schedule that lines up with the schedule of the traditional school day as much as possible. Even though you are at home, you are part of the LPA family. Please reach out whenever you or your student needs help.

Hybrid

Students in our hybrid model will have the unique opportunity to experience learning in multiple ways. This is an exciting opportunity for us to explore new ways of teaching and learning together. As hybrid students you will have to adhere to the procedures of the building environment when in the building and the workings of a virtual day when learning at home. The dynamics may feel complex at first, but we will work through it together.

Facebook

Follow Lorain Prep Academy for pictures, videos, and updates about the great things happening at LPA! If you would like to connect with LPA through other social media forums, let us know.

Grab and GO Meal Schedule

All virtual families can pick up grab and go meals at the school twice a week on
W/F 12:00 – 2:00

Hybrid Schedule

M/T – Hybrid K-5 in the building
Th/F – Hybrid 6-8 in the building



Lorain Preparatory Academy

4119 Leavitt Road

Lorain, OH 44053

Phone: 440-282-3127 Fax: 440-282-3179

www.lorainprep.org

"Where dreams and expectations roar"

Open House Updates

Embarking on this new year, we know a lot of things will look different this year. It is with the utmost concern and care for the safety of our staff and students who will be starting school on Thursday, August 20th, that we have made the decision to forego in person Open House this year. In its place we will hold grade level specific **Virtual Open House ZOOM links on Monday 8/17 from 4:00 – 5:00PM**

We know that as a parent who is new to our school, you may want to come in and see where your child is learning. For that reason, we will open the building up to **new families and families of kindergarten students on Tuesday 8/18 from 4:00 – 6:00PM**. Attendance will be limited to the student and one family member and will be by appointment only. You can use the Google Form at this link to reserve a time slot.

<https://forms.gle/cvraPEc64R1gXwPP9>

Thank you for your flexibility and cooperation as we make our way through this uncharted situation.

Virtual Open House – Grade Specific Links – Pop in and out of the sessions as needed

LPA Virtual Open House – Kindergarten

Time: August 17,2020 04:00 PM Eastern Time (US and Canada)

Join Zoom Meeting

<https://us04web.zoom.us/j/79921656183?pwd=aWlyb2FvbVdjVExkZ1QxVW1pNEZSZz09>

Meeting ID: 799 2165 6183

Passcode: VgnR4u

LPA Virtual Open House - Grade 1

Time: Aug 17, 2020 04:00 PM Eastern Time (US and Canada)

Join Zoom Meeting

<https://us04web.zoom.us/j/8390146369?pwd=cnRKWVlwTHERL0c1N2o2UjVCWmZVdz09>

Meeting ID: 839 014 6369

Passcode: 911428

LPA Virtual Open House-Grade 2

Time: Aug 17, 2020 04:00 PM Eastern Time (US and Canada)

Join Zoom Meeting

<https://us04web.zoom.us/j/77613584721?pwd=RUxqVHdsMmE4Y3FhTU9HV11YV0hHZz09>

Meeting ID: 776 1358 4721

Passcode: k68qnP

LPA Virtual Open House-Grade 3

Time: Aug 17, 2020 04:00 PM Eastern Time (US and Canada)

Join Zoom Meeting

<https://us04web.zoom.us/j/2293663814?pwd=OE5zMDN1UIBOekJVUkEvZlNkMDFHZz09>

Meeting ID: 229 366 3814

Passcode: 609244

LPA Virtual Open House - Grade 4

Time: Aug 17, 2020 04:00 PM Eastern Time (US and Canada)

Join Zoom Meeting

<https://us04web.zoom.us/j/79456425941?pwd=d3VqS0V0Rk03V05pbGJKWXpXc1dRUT09>

Meeting ID: 794 5642 5941

Passcode: M6FQws

LPA Virtual Open House - Grade 5

Time: Aug 17, 2020 04:00 PM Eastern Time (US and Canada)

Join Zoom Meeting

<https://us04web.zoom.us/j/74782842707?pwd=cm0vaWk2ajdOSitQS1UzQmZvZTM2QT09>

Meeting ID: 747 8284 2707

Passcode: 4z7k1H

LPA Virtual Open House- Grade 6

Time: Aug 17, 2020 04:00 PM Eastern Time (US and Canada)

Join Zoom Meeting

<https://us04web.zoom.us/j/72491753914?pwd=QkZBK3lsNGtsNWw4am5xdVdxaDhlUT09>

Meeting ID: 724 9175 3914

Passcode: 6thgrade

LPA Virtual Open House- Grades 7 and 8

Time: Aug 17, 2020 04:00 PM Eastern Time (US and Canada)

Join Zoom Meeting

<https://us04web.zoom.us/j/79080512681?pwd=TG5sNERPdFp6bzFQS2lSeWZZTkJxUT09>

Meeting ID: 790 8051 2681

Passcode: lions



LORAIN

PREPARATORY ACADEMY

Supply List: Traditional 2020 – 2021

Kindergarten:

- 6 Boxes of Crayola Crayons (24 pack)
- 2 Plastic folders
- 1 Clipboard
- 1 Plastic supply box
- 2 Boxes of #2 Pencils (24 count)
- 1 Pink eraser
- 12 Glue sticks
- 1 Notebook
- 1 Pair of blunt-tipped scissors
- 4 Dry erase markers
- 2 Highlighters
- 1 Book bag
- 1 Pair of headphones
- 2 Packages of baby wipes
- 1 Box of Gallon size Ziploc bags
- 1 Box of sandwich size Ziploc bags
- 4 Large boxes of Kleenex tissues
- 1 Box of washable markers
- 2 Rolls of paper towels

First Grade:

- 6 Boxes of crayons (24 count)
- 4 Glue stick packs
- 3 Boxes of pencils (24 count)
- 3 Packs of erasers
- 1 Supply box
- 2 Pair of scissors
- 1 Box of dry erase markers
- 2 Highlighters
- 5 Plastic folders
- 2 Spiral notebooks
- 4 Large boxes of tissues
- 1 Roll of paper towels
- 1 Box of gallon size Ziploc bags (boys)
- 1 Box of quart size Ziploc bags (girls)
- 1 Pack of baby wipes
- 1 Book bag
- 1 Box of markers

Second Grade:

- 2 Notebooks
- 2 Composition notebooks
- 40 Yellow pencils
- 6 Glue sticks
- 1 Glue Bottle
- 2 Boxes of crayons (24 count)
- 1 Box of markers
- 1 Box of colored pencils
- 1 Blue, green, yellow and red pocket folder (paper)
- 2 Heavy-duty plastic pocket folders
- 1 2-3 pack of dry erase markers (black)
- 1 Pair of scissors
- 1 Plastic supply box
- 6 Large pink erasers
- 1 Roll of paper towels
- 2 Boxes of Kleenex tissues

Third Grade:

- 3 Boxes of pencils (24 count)
- 2 Glue stick packs
- 2 Bottles of Elmer's Glue
- 2 Pairs of scissors
- 2 Packs of washable markers
- 3 Boxes of crayons (24 count)
- 3 Boxes of colored pencils (12 count)
- 1 Pack of eraser caps
- 3 Pink erasers
- 1 Plastic supply box
- 3 Packs of loose leaf paper (wide ruled)
- 3 Spiral notebooks (wide ruled)
- 4 Folders (4 different colors)
- 3 Boxes of tissues
- 1 Box of sandwich size Ziploc bags
- 1 Box of gallon size Ziploc bags
- 2 Rolls of paper towels
- 2 Packs of index cards
- 1 Ruler (inches & centimeters)

****Disclaimer: The list provided is for the duration of this school year. Please feel free to purchase the listed items at this time due to "Back to School" deals. However, we ask that you ONLY send 1 piece of each item listed and the full amount of pencils listed. This will help in eliminating clutter in the classroom and provide more space for your child. Also, book bags must be free of hanging objects.**

Fourth Grade:

- 1 1-inch binder (Thompson's class only)
- 2 Packs of loose leaf paper
- 5 Pocket folders (different colors)
- 5 Single subject notebooks
- 4 Pencil packs (24 count)
- 4 Glue stick packs
- 1 Box of colored markers
- 1 Box of colored pencils
- 1 Box of crayons (24 count)
- 3 Packs of erasers
- 4 Highlighters
- 1 Plastic supply box
- 1 Pack of dry erase markers
- 1 Box of gallon size Ziploc bags (girls)
- 1 Box of quart size Ziploc bags (boys)
- 2 Boxes of tissues

Fifth Grade:

- 5 Spiral notebooks
- 1 Box of crayons
- 1 Plastic supply box
- 10 Glue sticks
- 5 Folders
- 1 Pair of scissors
- 1 Highlighter
- 1 Box of gallon size Ziploc bags
- 1 Box of sandwich size Ziploc bags
- 2 Packs of pencils (24 count)
- 1 Pack of markers
- 1 Pack of colored pencils
- 2 Boxes of tissues
- 1 Pack of dry erase markers
- 1 Pack of erasers
- 1 Ruler
- 1 Pack of index cards
- 1 Pair of headphones

Sixth Grade:

- 2 Boxes of tissue
- 1 Box of gallon size Ziploc bags (girls)
- 1 Box of quart size Ziploc bags (boys)
- 1 Pair of scissors
- 1 Highlighter
- 2 Boxes of pencils (24 count)
- 1 Box of colored pencils
- 1 Pair of headphones
- 5 Folders (blue, red, green, yellow, purple)
- 4 Spiral notebooks (blue, red, green, yellow)
- 1 Plastic supply box
- 1 Glue stick
- 1 Pack of loose leaf paper
- 1 1.5 or 2-inch 3-ring binder (optional)

Seventh Grade:

- 5 Composition notebooks (2 red, 1 green, 1 blue, 1 black)
- 5 2-pocket folders (red, green, blue black, orange)
- 1 Pack of index cards
- 2 Boxes of tissues
- 1 Pack of colored pencils (12 count)
- 1 Manual pencil sharpener with container
- 4 Packs of 100 sheets of wide-ruled filler paper
- 1 Bottle of glue (4 – 8 ounces)
- 1 Supply box/pouch
- 1 Red pen
- 2 Erasers
- 2 Highlighters
- 2 Boxes of #2 pencils (24 count)
- 1 Pair of scissors
- 1 Book bag
- 1 1.5 or 2-inch 3-ring binder (optional)

Eighth Grade:

- 5 Composition notebooks (2 red, 1 green, 1 blue, 1 black)
- 5 2-pocket folders (red, green, blue black, orange)
- 2 Packs of index cards
- 2 Boxes of tissues
- 1 Pack of colored pencils (12 count)
- 1 Manual pencil sharpener with container
- 4 Packs of 100 sheets of wide-ruled filler paper
- 1 Bottle of glue (4 – 8 ounces)
- 1 Plastic supply box
- 2 Erasers
- 1 Red pen
- 1 Highlighter
- 2 Boxes of #2 pencils (24 count)
- 1 Pair of scissors
- 1 Book bag
- 1 1.5 or 2-inch 3-ring binder (optional)



LORAIN

PREPARATORY ACADEMY

Student Dress Code 2020 - 2021

Dress and Grooming

While fashions change, the reason for being in school does not. Students are in school to learn. Any fashion (dress, accessory, or hairstyle) that disrupts the educational process or presents a safety risk will not be permitted. Personal expression is permitted within these general guidelines. Students are required to wear the school uniform every day. The uniform guidelines are as follows:

Bottoms (light khaki, medium khaki, dark khaki, black, navy blue or denim jeans)

Pants*, Shorts**, Jumpers**, Skorts**, Skirts**

*Pants and denim jeans must be in good condition without rips, tears or holes in them. Pants/jeans must fit appropriately at the waist; ***no saggy/baggy pants or jeans; undergarments are not to be visible.***

**All shorts, jumpers, skorts, and skirts must not be any shorter than the end of the fingertips when arms are straight down. Students can wear leggings, stockings, tights, etc... underneath skirts/skorts. However, leggings, stockings, tights, etc... are not to worn by themselves as a pair of pants.

Tops (Solid Color)

Polo shirts, collared button-down shirts or blouse, turtlenecks, sweaters or plain solid color t-shirts. ***No hoodies, cut-off shirts, mesh shirts or tank tops.***

Shoes

Dress shoes (black or brown) or tennis shoes (various colors allowed). ***No sandals, flip flops or shoes with wheels.***

Belts/Accessories

Solid color belt. ***No large belt buckles.***

General Appearance

No facial/body piercings (earrings are acceptable). No hats, bandanas, or visors. Students cannot dye their hair an unnatural color (i.e. pink, purple, etc...)

Protective Face Covering (Mask)

All students in grades K thru 8 will be required to wear masks throughout the day.

- ❖ Violations of the dress code may result in the removal from the educational setting and be subject to penalty under the Student Code of Conduct.



2020 – 2021 Calendar

August 10 – 19, 2020.....	Teacher Pre-Service
August 20, 2020.....	First Day of School for Students
September 7, 2020.....	No School – Labor Day
September 18, 2020.....	1 st Quarter Interim Reports
September 28, 2020.....	No School – Teacher PD
October 9, 2020.....	No School
October 22, 2020.....	End of 1 st Quarter
October 26, 2020.....	No School – Teacher PD
November 23, 2020.....	2 nd Quarter Interim Reports
November 25 – 27, 2020.....	No School – Thanksgiving Break
November 30, 2020.....	No School – Teacher PD
December 21, 2020 – January 4, 2021.....	No School – Winter Break
January 5, 2021.....	School Resumes
January 13, 2021.....	End of 2 nd Quarter
January 18, 2021.....	No School – Martin Luther King Jr. Day
February 1, 2021.....	No School – Teacher PD
February 12, 2021.....	No School
February 15, 2021.....	No School – President’s Day
February 17, 2021.....	3 rd Quarter Interim Reports
March 1, 2021.....	No School – Teacher PD
March 19, 2021.....	End of 3 rd Quarter
March 29, 2021 – April 5, 2021.....	No School – Spring Break
April 6, 2021.....	School Resumes
April 26, 2021.....	4 th Quarter Interim Reports
May 26, 2021.....	End of 4 th Quarter
May 27, 2021.....	Last day for students
May 28, 2021.....	Last day for teachers

Board Approved: March 18, 2020



In-Person Learning Safety Guidelines

Physical Closure Protocol:

- If a student, staff member, or members of their household test positive for COVID-19 and has exposed others at school, the following will occur:
 - LPA will consult with both Accel Schools and local health officials to determine if closure is warranted
 - The space(s) where the COVID-19 positive person resided will close temporarily for disinfecting
 - Alternative plans for continuity of education, social services, and meal programs are in place during any temporary physical closure

Hygiene:

- Hand washing protocols will include:
 - Providing regularly scheduled and frequent hand washing opportunities for students and staff
 - Ensure access to hand washing sinks and sanitizer stations
 - Staff and students will be trained and retrained on proper hand washing techniques

Personal Protective Equipment (PPE)

- Students and Staff will wear face masks especially when physical social distancing cannot be maintained; and at least,
 - While awaiting to enter school building
 - While on school grounds except when eating/drinking
 - While leaving the school building
 - While on the bus
- May provide their own mask if it meets CDC guidelines or school will provide
- Staff and students will be trained on how to utilize PPE equipment appropriately

Physical Distancing:

- LPA will limit capacity to meet a minimum of 3 feet of distance between individuals (6 feet is preferred)
- LPA will attempt to create small cohorts to minimize the mixing of groups
- Virtual activities will replace in-person activities where possible
- Directional signage will be used throughout the building

Buses:

Guidance will be provided by contractor however students and parents/guardians will be instructed to maintain 6-foot distancing at bus stops

- Face masks will be worn at bus stops and while riding the bus

Playground/Outside Spaces/Athletics:

- Supervision will be in place to ensure physical distancing
- Physical Education will be limited to activities *not* involving physical contact

Classrooms:

- Determine maximum capacity for students of each classroom based on physical distancing objectives (3-foot minimum, 6-foot preferred)
- Student desks will all face forward
- Utilize common spaces to spread out if needed (ex. gym, commons, outdoors)

Food Service:

- Implement strategies to limit physical interactions during meal preparation and will consider serving meals in alternate areas such as the classroom
- Provide meal pick up opportunities for students enrolled in online and blended learning modalities

Cleaning and Disinfecting:

- Avoid sharing electronic devices, toys, books, and other games or learning aids
- Limit items that are difficult to clean and/or sanitize
- Disinfecting hard surfaces in between student/cohort usage
- Ongoing Cleaning and disinfecting will be conducted safely, thoroughly, and with regular fidelity utilizing approved disinfectant products
- Close off areas used by any sick person and will not use space before disinfecting is completed
- Will keep student belongings separated and send home for daily cleaning

Communication with Students, Families, Employees, and Public Health Officials

- LPA will communicate regularly with staff, students, and parents about new COVID-19 related protocol, such as;
 - Proper use of PPE
 - Cleanliness and disinfecting
 - Guidelines regarding when to keep students' home from school
 - Self-reporting symptoms
- LPA will communicate when a positive COVID-19 case occurs by:
 - Documenting, reporting, tracking, and tracing infections in coordination with public officials
 - Notifications to staff and families
 - Advise sick staff members and children not to return until they have met health criteria
 - Inform those who have had close contact with person diagnosed



Lorain Preparatory Academy
4119 Leavitt Road
Lorain, OH 44053
Phone: 440-282-3127 Fax: 440-282-3179
www.lorainprep.org
"Where dreams and expectations roar"

Arrival and Dismissal Procedure

As our number one focus is the safety of our students and our staff, we have slightly altered our arrival and dismissal procedures. Please read this carefully so that we can get everyone in and out of the building in a safe and efficient manner.

*****The front entrance will not be utilized for arrival or dismissal. All students will enter and exit through the back of the building*****

Bus Riders

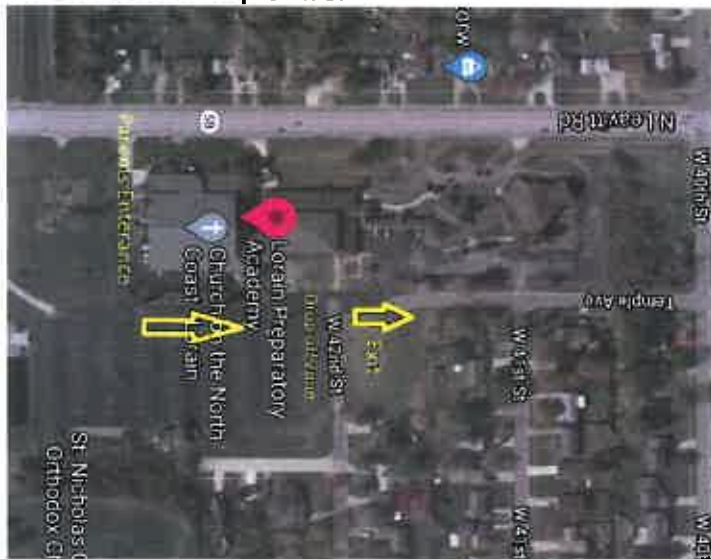
- Bus riders will arrive at the North East Entrance, closest to the elementary swing set.
- Students will remain seated on the bus until an LPA staff member scans their temperature with a no touch thermometer and dismisses them to the building.
- Students will enter the building, be given their breakfast and go directly to their classroom
- If a student presents with a fever or has visible symptoms of illness, that student will go directly to the illness station for immediate pick up. *****It is imperative that you DO NOT send your student on the bus if they, or anyone in your household, are not feeling well or have a fever*****
- Bus Riders will be dismissed to their bus through the same doors as their arrival.

Car Riders – Arrival 7:45 -8:00am

- Students arriving in a personal vehicle should be dropped off at the South East Entrance, closest to the middle school swing set/gym.
- Parents should enter the lot from the southern Leavitt Road Entrance, closest to the Church on the North Coast and proceed north in the line of traffic through the parking lot.
- For the safety of all students and staff, please remain in the drop-off line until you are in the drop-off zone.
- Students should exit the vehicle from the driver's side.
- An LPA staff member will scan each student's temperature with a no touch thermometer.
- Once cleared, the student can proceed into the building where they will be given breakfast and go directly to class.
- Vehicles should continue North and exit the parking lot onto Temple Ave.

Car Riders - Dismissal 3:15 – 3:30pm

- Vehicles should enter the lot and join the line of traffic in the same location and direction as AM arrival.
- Parents should remain in their vehicles and an LPA staff member will verify the students being picked up and communicate with staff in the building.
- Students will be released by LPA staff from the building and assisted to their vehicle.
- Cars should exit onto Temple Ave.



****No students will be dismissed through the front office after 2:30 pm****



Visitors in the Building Protocol

Lorain Preparatory Academy values its' students, families, and community members above all else. Given these unprecedented times, it is essential that we do everything possible to protect them. Therefore, we ask that families and community members utilize all other forms of communication (i.e. phone calls, text messages, social media, fax etc.) when possible.

If an *in-person* visit is necessary, we ask that visitors please follow the following safety guidelines:

- Please utilize the front door entrance.
- Upon entering, ***please make sure you are wearing a mandatory protective mask (disposable masks are available for guests upon arrival)***
- All visitors are required to sign into our health and safety binder to volunteer any present symptoms
- ***We are requiring temperature checks for all visitors***
- Please know if you are not feeling well, answer YES to either health and safety binder question, or are running a temperature over 100 degrees you will be politely asked to return at another time in order to keep our students and staff safe.
- If you are visiting a staff member or your student, they will be called to come to the front office to see you.
- Unfortunately given the COVID 19 pandemic, There will be ***no birthday parties, field trips, classroom volunteer opportunities etc. at this time.*** Thank you so very much for understanding.
- If you have any further questions regarding visitors in our building, please do not hesitate to call our office at 440-282-3127 for clarification.

Thank you,

Lorain Preparatory Academy



Protective Mask/Face Covering Policy

Given health and safety requirements mandated by the Centers for Disease Control and Prevention (CDC) and all state and local health and safety organizations, all Lorain Preparatory Academy in-person learning model students, faculty, staff, families, and community members are required to wear protective masks throughout campus while also abiding by appropriate social distancing protocols.

Students and their families who have chosen to take part in our traditional in-person learning model this year are also agreeing to take part in all safety policies and procedures required; including wearing an appropriate and effective protective mask covering both the nose and mouth to best prevent the spread of germs and viruses. There is very little latitude when it comes to wearing protective masks. Masks are mandatory for all students accessing our traditional in-person learning model to keep us all safe. **EVERY LPA STUDENT IS REQUIRED TO WEAR A PROTECTIVE MASK ON THE BUS AND ON OUR SCHOOL CAMPUS.** If a student does not have a mask, one will be provided to them.

For those students unwilling to abide by our mandatory safety guidelines, the following consequences will be strictly enforced for the safety of all.

- A first mask violation will result in the non-compliant student's parents/guardian being called and may result in need to pick up the student from school for the remainder of the school day.
- A student's repeated refusal to comply with our mandatory mask safety policy, may result in administration recommending the non-compliant student take part in our school's completely online learning modality.

Thanks to all of our amazing LPA families for everything you do and for always supporting us in supporting the health, safety, and education of all students.

COVID-19 Symptom Self-Assessment Protocol



We know that we will never fully eliminate the risk of COVID-19, however it is up to all of us to lessen that risk for ourselves and everyone around us. Going into public spaces, such as entering the school building comes with certain responsibilities. Therefore, it is required that families monitor their student and everyone in the household for symptoms daily, prior to leaving for school.

Please assess your child and your household members for symptoms daily:

- Check for fever. If your child, or anyone else in your household has a fever, please keep your child home from in person attendance.
- Ask your child if everything in their body feels “normal” and assess for the following symptoms:
 - Fever above 100.4 degrees
 - Cough
 - Shortness of breath or difficulty breathing
 - Fatigue
 - Muscle or body aches
 - Headache
 - New loss of taste or smell
 - Sore throat
 - Congestion or runny nose
 - Nausea or vomiting
 - Diarrhea

If your child, or anyone in your household has any of the above symptoms, please keep your child home from in person attendance.

If you are keeping your student at home, you need to call the school office 440-282-3127 or use our online absence link www.lorainprep.org/report-absence. You must follow all guidance from the school on when and how your student can return following an absence.

Thank you,
Lorain Preparatory Academy



LORAIN PREPARATORY ACADEMY

COVID-19 Screening and Safety Protocol

In order to keep our students, staff, and community as safe as possible during this global pandemic, Lorain Preparatory Academy will be implementing the following Covid-19 screenings and safety protocol for all students and staff.

Daily Screening: School staff will screen every student for symptoms upon arrival; staff will self-screen

- Student exhibiting symptoms will be immediately separated from others until retrieved by an authorized adult; parent/guardian will be notified of home isolation criteria
- Staff exhibiting symptoms will immediately return home and will be provided return-to-work criteria

Exposure with no symptoms:

May not return to school until one of the following occur;

- Provide proof of negative COVID-19 test
- Be cleared in writing by a medical professional or public health agency for return to school
- Attest that at least 10 days have passed since exposure

Exposure with mild symptoms:

May not return to school until all of the following occur;

- Attest that at least 10 days have passed since first symptoms appeared
- Attest that at least 24 hours have passed without fever and use of medication
- Attest that all symptoms have improved

Exposure or diagnosis of COVID-19 with strong symptoms:

May not return to school until **all** of the above-mentioned conditions are met, and all symptoms have resolved

Our most important priority is ALWAYS the health and safety of our students and staff.

As always, thank you for all of your collaboration and support. Please reach out to us for any questions or concerns at 440-282-3127

Thank you,
Lorain Preparatory Academy



LPA Traditional Learning Model - Quick Family Guide

What can you expect from the school and traditional teacher?

LPA teachers and staff are committed to delivering a well rounded education to your student(s) while learning in person and abiding by the safety guideline set forth by the CDC.

- Smaller cohorts of students with the mixing of cohorts to be limited.
- More frequent hand washing and sanitizing. Students should wash/sanitize hands upon entering the building, before and after handling supplies, lunch, gym class, recess, using the restroom, and before leaving the building.
- Students will be assigned seats, which will be spaced with as much space as possible in between.
- All staff will be required to wear masks
- K-12 Students will be required to wear masks wherever social distancing will be compromised.
- Teachers will be encouraged to offer opportunities for students to take breaks from their masks when social distance of 6 feet or more can be achieved and they are in a space with appropriate air flow.

What does this look like for our students?

Students will be engaged through daily classroom discussions, independent practice, and the use of our Canvas Visual Learning Platform. During in-person learning every student **MUST** abide by the social distancing of 6 ft apart where available, 3 feet within the classroom. In addition, the practice of washing/sanitizing their hands and wearing a mask for the duration of the school day will be enforced.

What does this look like for our parents/guardians?

It is of vital importance that students and staff stay home when they are not feeling well. We all need to take added responsibility for everyone's safety. Please assess your student daily for symptoms of COVID-19. In addition, the availability of yourself, a family member or friend to pick up your child in the event they become ill in a timely manner is very important as well. Your student's teacher will communicate with you regarding your child's in person learning successes as we have always done at LPA.

The student expectations are....

All students at LPA are expected to follow the PRIDE way! See PRIDE behavior Matrix:

P-Prepared

R-Respectful

I-Independent

D-Disciplined

E-Engaged

Protect yourself and your community from COVID-19.

- Keep 6 feet apart from people in public.
- Wear a cloth face covering in public.
- Wash your hands often.
- Stay home if you're sick.



Face Coverings

How to wear a face covering.

Cover your nose *and* mouth.



Wear a face covering to help protect others in case you're infected but don't have symptoms.



How to wash.

Cloth face coverings should be washed after each use. You can include your face covering with your regular laundry. Use regular laundry detergent and the warmest appropriate water setting for the cloth used to make the face covering.



Lorain County
Public Health

440-322-6367

Cómo protegerse y proteger su comunidad del COVID-19.

- Mantenga una distancia de al menos 6 pies de otras personas.
- Cúbrase la boca y la nariz con una cubierta de tela para la cara cuando esté cerca de otras personas.
- Lavarse las manos frecuentemente.
- Quédese en su casa si está enfermo.



Cubiertas de tela para la cara

Cómo usar las cubiertas de tela para la cara.



Use una cubierta de tela en su cara para ayudar a proteger a los demás en caso de que usted esté infectado pero que no presente con síntomas.



Cómo lavar las cubiertas de tela para la cara.

Las cubiertas de tela para la cara deberían lavarse después de cada uso. Puede lavar su cubierta de cara con el resto de su ropas. Use jabon de lavar la ropa y use la temperatura del agua mas calida y apropiada para la tela que se usa para cubrir la cara.

